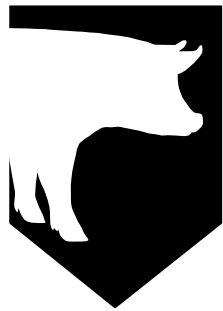


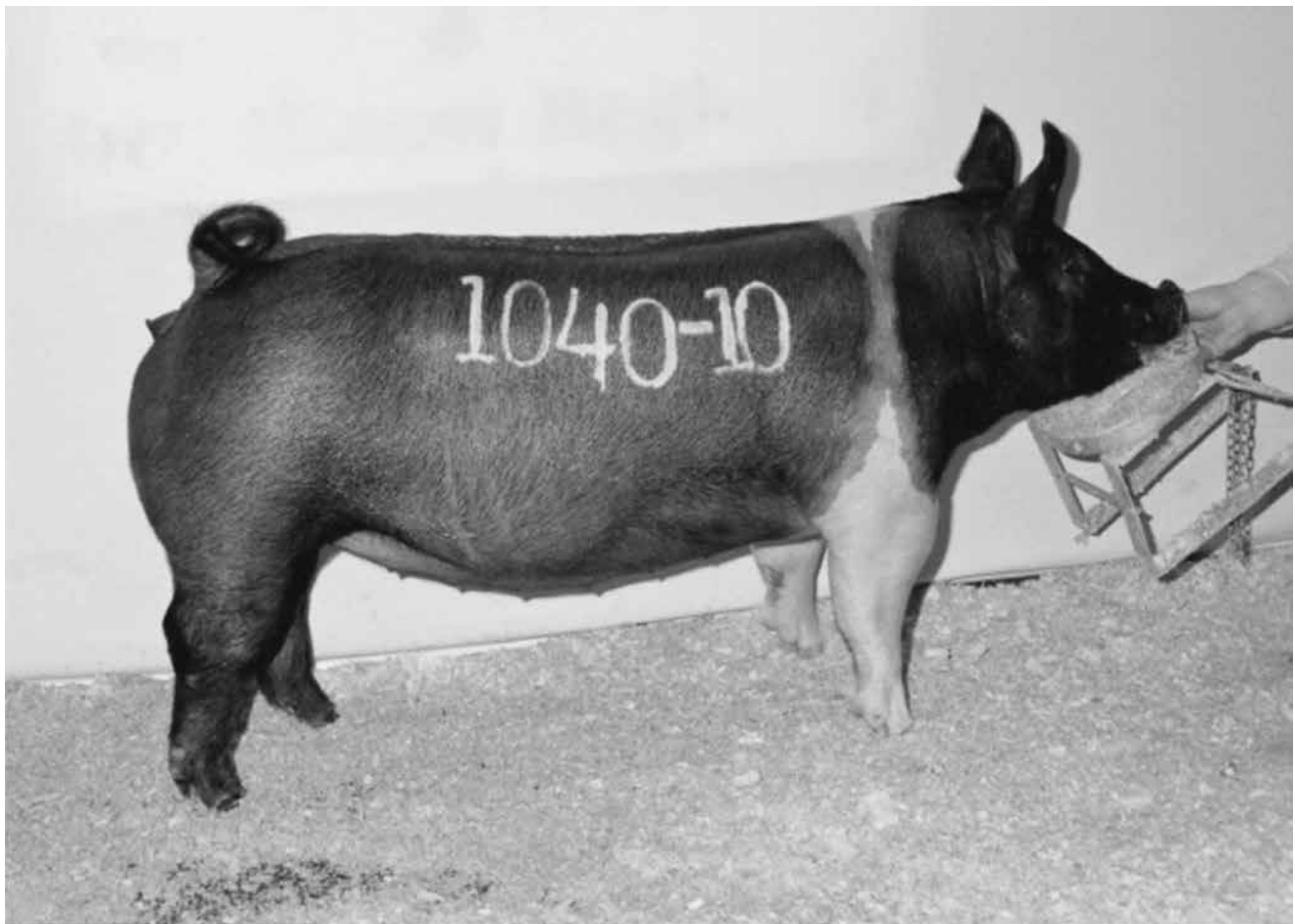
SKILLATHON



ACTIVITY

SENIOR

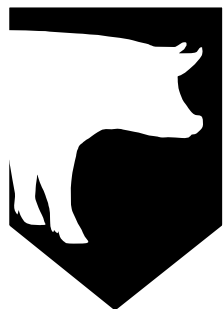
Keep/Cull Gilts



Gilt #1



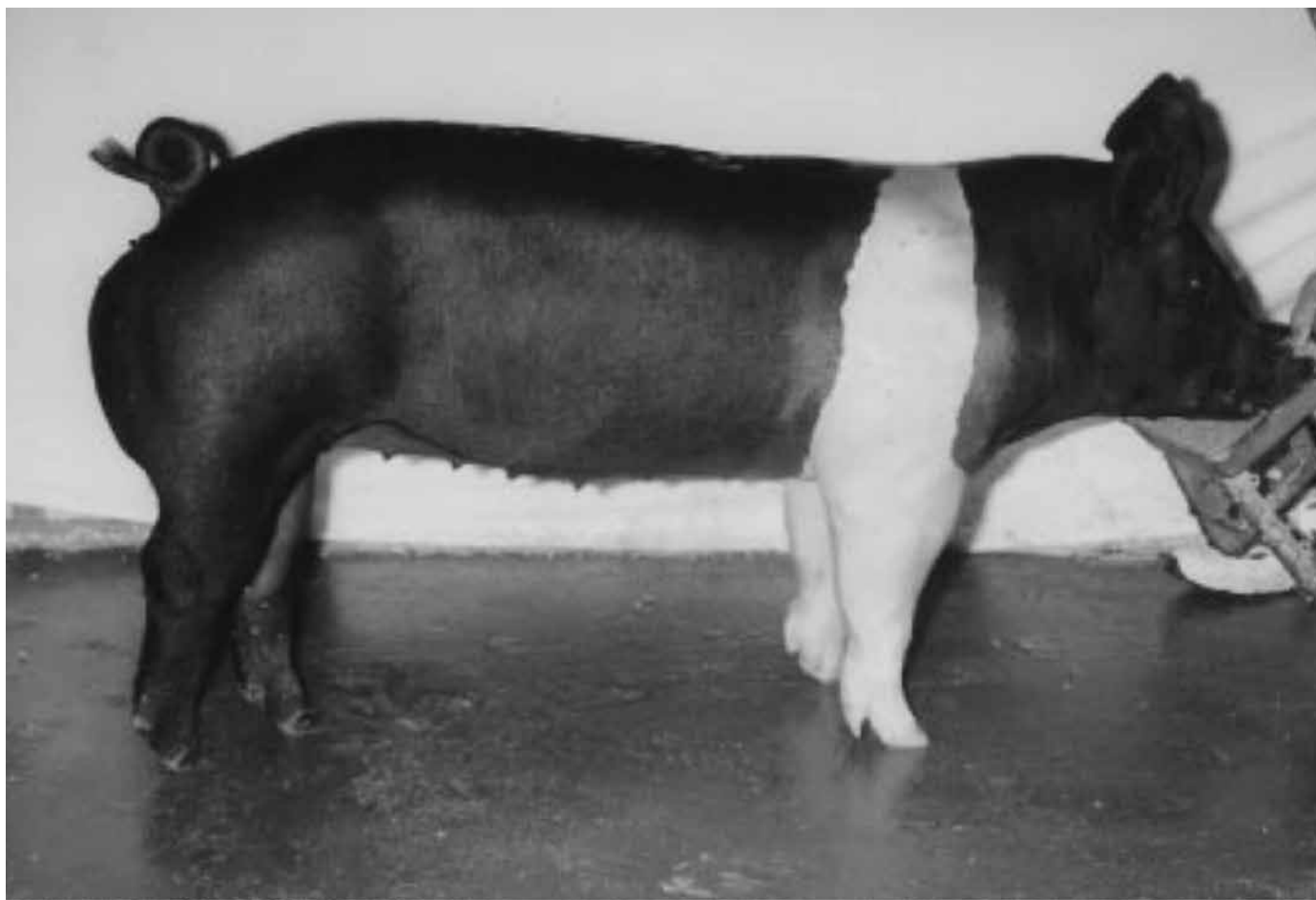
SKILLATHON



ACTIVITY

SENIOR

Keep/Cull Gilts



Gilt #2



SKILLATHON



ACTIVITY

SENIOR

Keep/Cull Gilts



Gilt #3



SKILLATHON



ACTIVITY

SENIOR

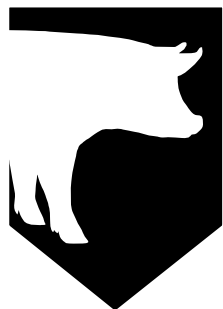
Keep/Cull Gilts



Gilt #4



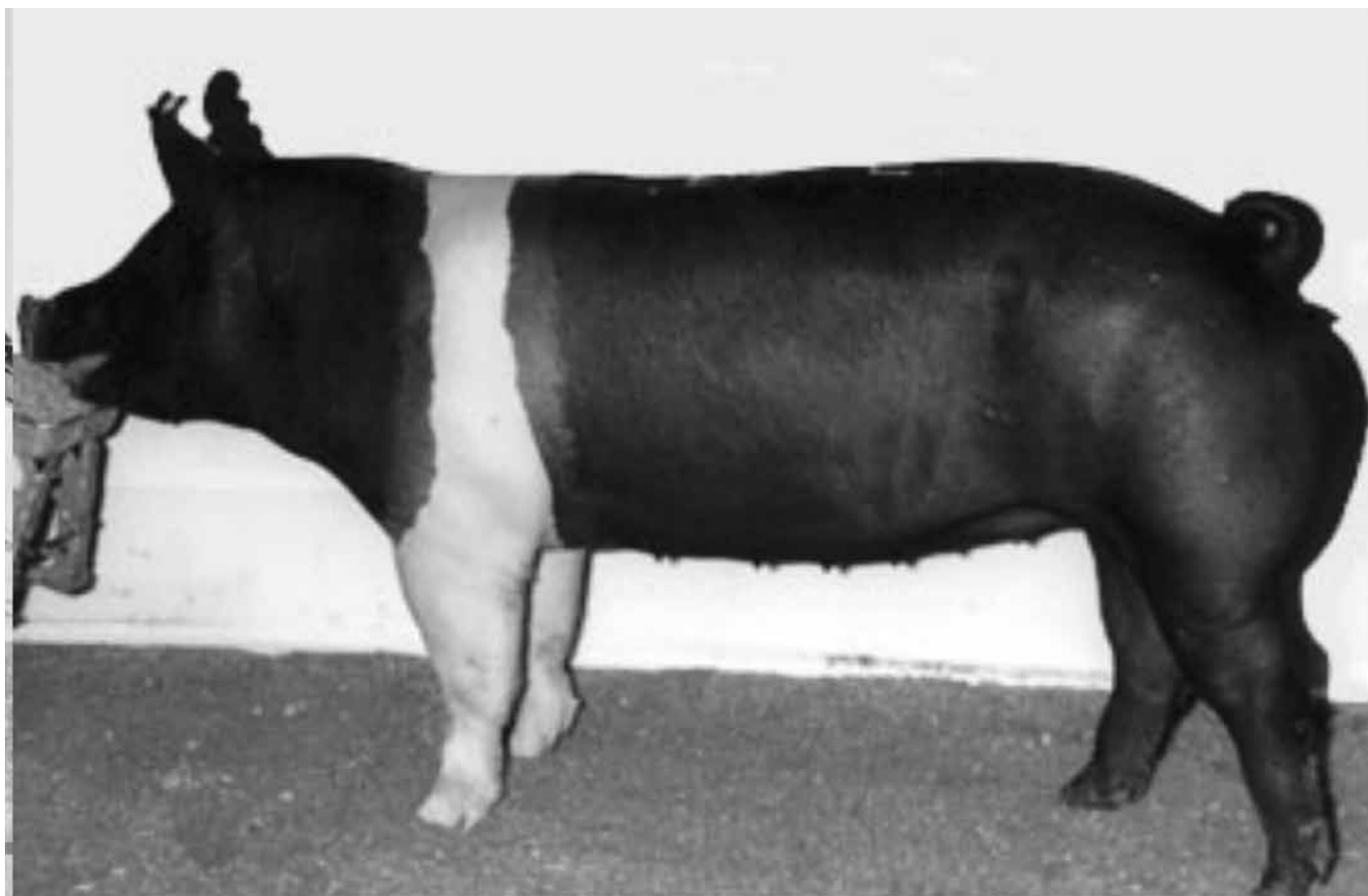
SKILLATHON



ACTIVITY

SENIOR

Keep/Cull Gilts



Gilt #5



SKILLATHON



ACTIVITY

SENIOR

Keep/Cull Gilts



Gilt #6



SKILLATHON



ACTIVITY

SENIOR

Keep/Cull Gilts



Gilt #7



SKILLATHON



ACTIVITY

SENIOR

Keep/Cull Gilts



Gilt #8



SKILLATHON



ACTIVITY

SENIOR

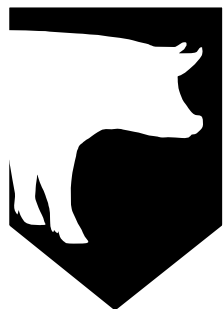
Keep/Cull Gilts

Scenario: These gilts will be used in a purebred operation where the primary focus is to produce elite gilts to exhibit in a breeding class at a show. All non-replacement gilts and barrows will be kept, raised and marketed on a lean value based system.

	NBA	Days	BF	SPI	TSI
1	.03	.72	-.01	101.5	100
2	.01	.78	-.03	99	98
3	.03	.76	-.01	100	99
4	.01	.80	-.04	95	96
5	.04	.74	-.02	100.5	99
6	.05	.72	0.0	102	100
7	.03	.73	-.01	98	99
8	.03	.71	.01	101	99



SKILLATHON

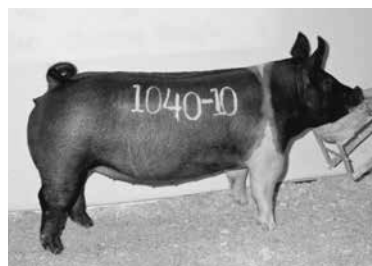


ACTIVITY

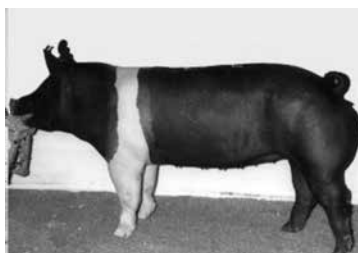
SENIOR

Keep/Cull Gilts

WRITE KEEP OR CULL NEXT TO EACH PICTURE



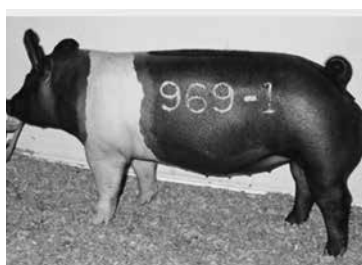
Gilt #1



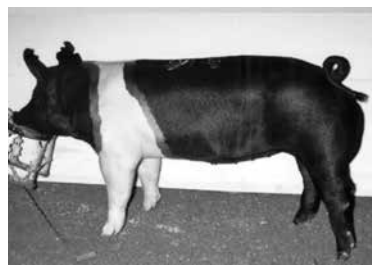
Gilt #5



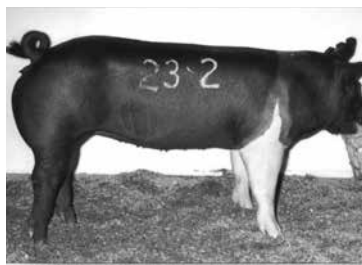
Gilt #2



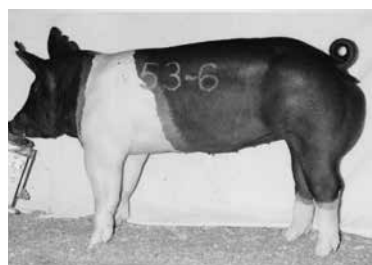
Gilt #6



Gilt #3



Gilt #7



Gilt #4



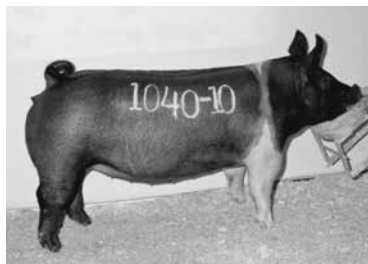
Gilt #8



SKILLATHON

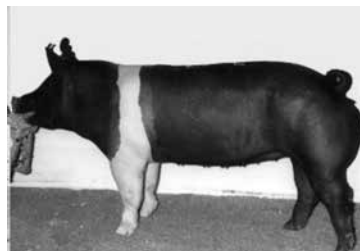


KEY SENIOR Keep/Cull Gilts



Gilt #1

**KEEP
7 POINTS**



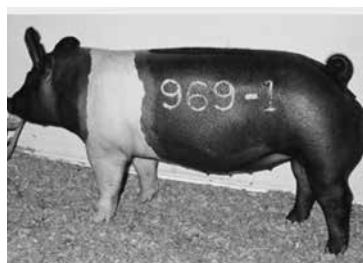
Gilt #5

**KEEP
3 POINTS**



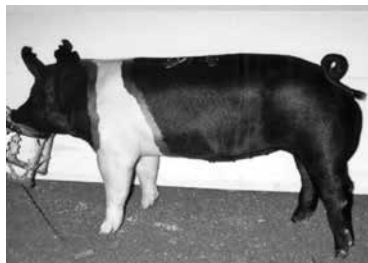
Gilt #2

**CULL
0 POINT**



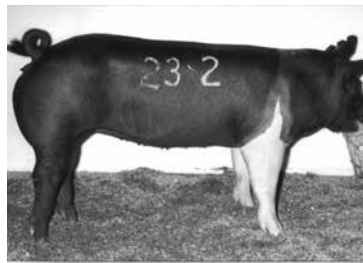
Gilt #6

**KEEP
9 POINTS**



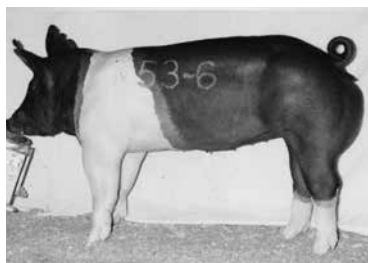
Gilt #3

**CULL
0 POINTS**



Gilt #7

**CULL
0 POINT**



Gilt #4

**CULL
0 POINTS**



Gilt #8

**KEEP
6 POINTS**



INSTRUCTIONS

SKILLATHON



SENIOR Keep/Cull Gilts

Senior Keep Cull Gilts Instructions

- There are eight photos of Hampshire gilts at this station along with a set of EPD's on the gilts.
- Each participant is to select 4 gilts to keep and 4 gilts to cull. They are to base their decision on the gilts EPD's as well as their physical appearance.
- Please give each participant a maximum of 4 minutes to make their selection. They must show you or tell you which gilts they have chosen to keep and cull. They are allowed to pick up the photos to look at them and move them around.

Scoring: The participants score sheet will have the point values that have been assigned for each gilt listed. Base the points the participants receive on what 4 gilts they chose to KEEP. Add up the point values for the 4 KEEPER gilts, do not do anything with the gilt points that the participant chose to cull; the only important points are the points from the KEEPER gilts. Write the total points for the 4 KEEPER gilts in the total points slot on the score sheet.

****This station has a total of 25 points.****

Thank you very much for volunteering to help with the skillathon. Please remember to complete the skillathon facilitator information sheet and leave it on your stations table at the end of the competition. Thank You!!



SKILLATHON



STATION # _____

SENIOR

Keep

Cull Gilts

